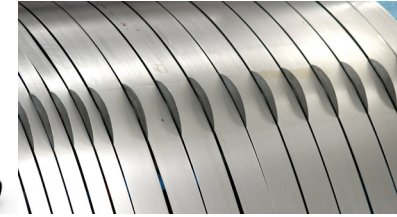
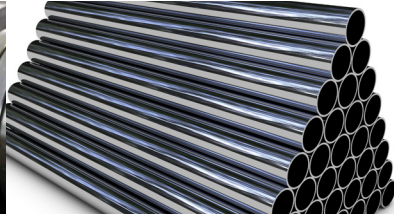


CIMTUBE® FHC35-25

Boron and formaldehyde releasing agent free product
for tube forming, welding and cut off
equipped with CimShield Technology.



PRODUCT INFORMATION FLYER

Description

Cimtube FHC35-25 is a water-miscible, fully synthetic forming and cutting fluid concentrate. It is free of boron, nitrite, chlorine and formaldehyde releasers. The Cimtube FHC35-25 is equipped with Cimcool's unique CimShield Technology. This innovative technology will secure the product stability, the pH buffering of the mix and gives excellent corrosion protection.

Application

Cimtube FHC35-25 is recommended to be used for forming, hydrostatic and ultra-sonic testing, welding and sawing applications in the Tube & Pipe industry.

Cimtube FHC35-25 is a light to medium duty fluid with excellent corrosion protection properties that can be used in a wide waterhardness range.

Features and benefits

- CimShield Technology - Based on a unique formulation and contains a special blend of new innovative materials. These materials work in synergy providing product stability, pH buffering and corrosion protection. The results equal traditional products which contained boron and formaldehyde releasing agents. The CimShield Technology not only protects the product from outside influences but also shields the product from evaporation, resulting in low top up rates and thus reducing overall consumption.
- Excellent; pressure stability, cooling and settling properties
- Operator friendly - clean, mild and pleasant to use: no mineral oil mist and odor free.
- Economical - Low top up rate, long fluid life, excellent results.

Methods of application

Cimtube FHC35-25 is easy to mix, normal stirring only. For automatic mixing, the use of the Cimcool® Mix Master or Cimcool Mix Master S is recommended. Typical starting water temperature conditions should be 5 - 25°C.

Recommended starting concentration

Tube forming and welding	6%
--------------------------	----

Mix Master S

Concentration** can easily be obtained by setting the regulator to the correct number.

** The concentration may vary depending on local conditions. It is therefore always advised to check using the refractometer or TA Kit.

Concentration analysis

For concentration analysis, use one of the below given methods or an appropriate laboratory procedure available from your local stockist.

Refractometer factor:	2.0
-----------------------	-----

If the refractometer is used, the resultant reading multiplied by a factor of 2.0 will only be relevant when applied to a fresh mix.

Cimcool TA kit	Use 2 ml. mix										*: next syringe
%	1	2	3	4	5	6	7	8	9	10	
Reading	0.75	0.45	0.16	*.87	*.58	*.28	** .99	** .70	** .40	** .11	

Handling and storage

Protect from freezing, direct sun and store between 5 - 35°C.

Packaging type

200, 1000 litre and bulk.

Safety Data Sheet

The Safety Data Sheet should be consulted for specific information and information on Health, Safety and Environment when handling this product.



Cimcool Industrial Products
Schiedamsedijk 20
3134 KK Vlaardingen
The Netherlands
Tel: +31 (0)10-4600660
cimcool.eu@duboischemicals.com
www.cimcool.com

