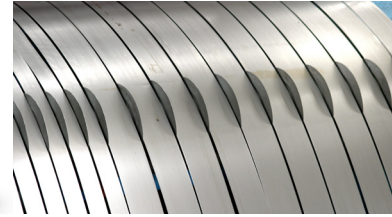
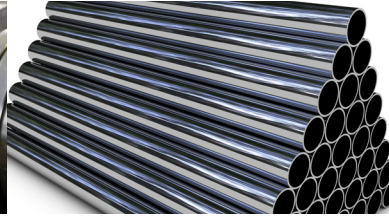


CIMTUBE® CP37-186HW

Boron and formaldehyde releasing agent free product
for bar peeling and tube cutting equipped with
CimShield *N-Durance* Technology



PRODUCT INFORMATION FLYER

Description

CIMTUBE® CP37-186HW is a hassle free all-round heavy duty emulsion primarily developed for bar peeling and tube cutting operations. The CIMTUBE® CP37-186HW is equipped with Cimcool's CimShield *N-Durance* Technology. This latest technology innovation boosts the product "N-Durance" combining high alkalinity with acceptable pH, thereby securing product stability, pH buffering and corrosion protection.

Application

CIMTUBE® CP37-186HW is developed for heavy duty cutting and bar peeling operations. CIMTUBE® CP37-186HW is especially developed for use in medium to hard water (12 to 25°dH in starting water).

Features and benefits

- The innovative blend of "N-Durance" materials work in synergy providing alkalinity, product stability, pH buffering and corrosion protection. The result is a next generation CimShield Technology outperforming many traditional products, by providing low-top up rates, clean machines and high product stability
- CIMTUBE® CP37-186HW is a mil and clean heavy duty emulsion. It provides a high quality finish and excellent stability. This stability ensures a long fluid life, which makes CIMTUBE® CP37-186HW a very cost-effective product.
- CIMTUBE® CP37-186HW notably improves production. Effective lubricants reduce the amount of heat generated in the cutting zone permitting higher speeds and feeds, thereby increasing production while maintaining or improving overall part quality

Methods of application

CIMTUBE® CP37-186HW is easy to mix, normal stirring only. For automatic mixing, the use of the Cimcool Mix Master S is recommended. Typical starting water temperature conditions should be 5 - 25°.

Recommended starting concentration

Peeling and tube cutting	6 - 12 %
--------------------------	----------

Mix Master S

Concentration** can easily be obtained by setting the regulator to the correct number.

** The concentration may vary depending on local conditions. It is therefore always advised to check using the refractometer or TA Kit.

Concentration analysis

For concentration analysis, use one of the below given methods or an appropriate laboratory procedure available from your local stockist.

Refractometer factor:	1.2
-----------------------	-----

If the refractometer is used, the resultant reading multiplied by a factor of 1.2 will only be relevant when applied to a fresh mix.

Cimcool TA kit	Use 1 ml. mix							*: next syringe		
%	1	2	3	4	5	6	7	8	9	10
Reading	0.85	0.71	0.58	0.45	0.32	0.18	0.05	*.92	*.78	*.65

Handling and storage

Protect from freezing, direct sun and store between 5 - 35°C.

Packaging type

200 and 1.000 litre and bulk.

Safety Data Sheet

The Safety Data Sheet should be consulted for specific information and information on Health, Safety and Environment when handling this product.



Cimcool Industrial Products
Schiedamsedijk 20
3134 KK Vlaardingen
The Netherlands
Tel: +31 (0)10-4600660
cimcool.eu@duboischemicals.com
www.cimcool.com

